

Mai-Ndombe

• Bandundu

• Bagata

• Kimbie

• Pana

• Kibai

• Kalo

• Kapia

Kin.

• Zaba

• Bulungu

• Masumuna

• Mosango

• Kikwit

• Idiofa

• Bendji

Kasai

• Kakobola

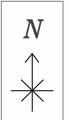
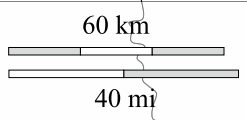
• Gungu

• Kilembe

ANGO.

Kwango

© d-maps.com



○ → □ Mercator